

# SWP™ Hydrous Sheets

SWP™ Hydrous Sheets are designed to give optimal results in paper making processes. Delivery parcels contain 150 to 170 sheets wrapped in polyethylene film to preserve quality.



1 bale\*



Pallet loading

\*1 bale  
approximately 70cm(L) × 60cm(W) × 65cm(H),  
Weight differs with series.

**210Kg : E series**

**170Kg : NL series, AU series**

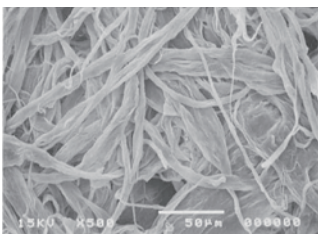
- Air dry weight (ADKg) listed on all bale labels.
- SWP™ trading unit includes air dry weight and 10% moisture.
- Air dry weight = gross weight × (100 - moisture content) / 90

## ■ SWP™ Hydrous Sheet Series Chart

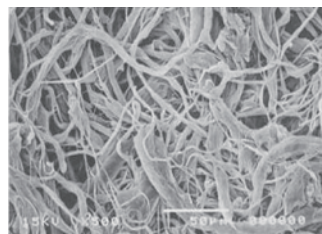
Grade	Series	Melting Point (°C)	Canadian Standard Freeness Method (mL)	Average Fiber Length (mm)	Moisture Content (%)	Fiber Diameter	Main Characteristics	Main Applications
E Series (PE)	E400	135	580	0.9	63	Standard	Superior texture composition	Paper/Construction material
	E524		340	1.2	57	Standard	Excellent bonding between fibers	Construction material
	E620		340	1.2	64	Standard		General Purpose Grades (Paper/construction material, etc.)
	E690		700	1.3	53	Standard	High drainage properties	Tea bags Coffee pods
	E790		680	1.5	50	Standard	Long fibers/ High drainage properties	
	EST-2		470	0.9	59	Fine	Fine fibers	Special paper
	EST-8		540	0.9	59	Fine		
NL Series (Denatured PE)	NL491	100	720	1.0	55	Thick	Hot tack Low melting point	Tea bags Coffee pods
AU Series (Denatured PE)	AU690	120	680	1.2	52	Thick	Excellent adhesive properties Low melting point	

All properties are representative measurement figures obtained under specified test methods at Mitsui Chemicals, Inc. and are not guaranteed as specifications.

## ■ Microscopic Photo



Standard fiber (E400)



Fine fiber (EST-8)



**MITSUI CHEMICALS, INC.**  
**Synthetic Pulp Department**  
**Nonwovens Division Health Care Business Sector**  
 Shiodome City Center, 1-5-2 Higashi-Shimbashi, Minato-ku,  
 Tokyo 105-7122, Japan  
 TEL: +81-3-6253-3651 FAX: +81-3-6253-4226